



BIN JOHAR

METALS CONTRACTING

CORPORATE PROFILE

BUILDING STRUCTURES THAT LAST

METAL WORKS | CIVIL CONSTRUCTION | TENSILE SHADE STRUCTURES

Table of Contents

Introduction	01
MD Message	02
Our Vision, Mision & Value System	03
The Bin Johar Advantage	04
Sectors We Serve	04
Our Assurance	05
Quality	06
Health, Safety & Environment (HSE)	07
Technology	08
Our Accreditations	09
Scope of Services	13
Metal Works	14
Civil Construction	15
Tensile Shade Works	16
Our Resources	17
Team Organization Chart	18
Projects Portfolio	19
Project List	20
Project Gallery	21
Equipment List	22

Introduction

Bin Johar Metals Contracting has been delivering dependable construction solutions across the UAE since 2002. What began as a focused contracting operation has evolved into an integrated services company offering metal works, civil works, and tensile shade solutions for industrial, commercial, and infrastructure projects.

Our strength lies in experience built on site; understanding materials, conditions, regulations, and execution challenges that only time and consistent delivery can teach. Every project is approached with structured planning, technical discipline, and strict adherence to approved drawings, specifications, and safety requirements.

Bin Johar operates through ISO-aligned management systems that support quality control, safe working practices, environmental responsibility, and process consistency. These systems, combined with experienced teams and controlled workflows, enable reliable execution and long-term performance.

Backed by two decades of industry expertise, Bin Johar continues to support evolving client requirements through accountable delivery, continuous improvement, and a commitment to long-term value.

**That is why our work stands the test of time.
And that is why our clients stay with us.**





MD Message

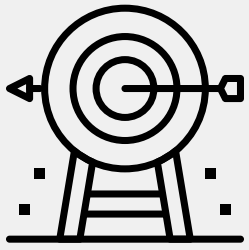
Over the past twenty years, Bin Johar has grown through experience earned on site, challenges faced head-on, and relationships built on trust. Our journey has been shaped by a simple belief: lasting structures are the result of disciplined execution, responsible practices, and people who take pride in their work.

From our early days to where we stand today, we have remained focused on delivering dependable metal works, civil works, roofing, and tensile shade solutions across the UAE. Each project has reinforced the importance of planning with clarity, executing with precision, and adhering to the highest standards of quality, safety, and compliance.

Our growth has been supported by strong teams, structured systems aligned with international standards, and a culture that values accountability and continuous improvement. We invest in our people, embrace technology where it adds value, and maintain a hands-on approach to every project we undertake.

As we look ahead, our commitment remains unchanged. We will continue to strengthen our capabilities, uphold the trust placed in us by our clients and partners, and deliver work that stands the test of time. I extend my sincere appreciation to our teams, clients, and stakeholders who have been part of this journey and who continue to shape the future of Bin Johar.

Abdullah Ali Johar
Managing Director – Bin Johar Group



Our Vision

To strengthen our position as a trusted contracting provider by consistently delivering high-standard metal, civil, and tensile shade solutions that meet regulatory, operational, and client performance expectations.



Our Mission

To support the UAE's development sector with reliable construction and engineering services, ensuring every project is completed safely, efficiently, and to the specifications required by clients and authorities.



Our Value System

At Bin Johar, integrity, accountability, and quality guide everything we do. We focus on safe execution, reliable delivery, and long-term partnerships built on trust.

The Bin Johar Advantage



20+ years of operational experience in the UAE



ISO-certified quality and safety standards



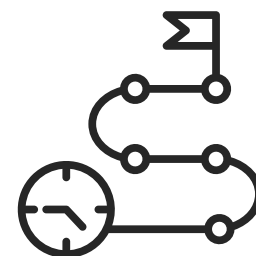
In-house fabrication and skilled technicians



Proven track record across residential, commercial, and industrial sectors



Capability to manage both small-scale and large multi-scope projects



Reliable timelines and disciplined project management



Long-term client relationships built on trust and performance

Sectors We Serve

Residential Communities | Commercial Buildings & Retail
Industrial Facilities & Warehouses | Schools, Parks, & Public Spaces |
Automotive Centres | Developers & Contracting Firms | Government &
Semi-government Projects



OUR ASSURANCE

QUALITY

HEALTH, SAFETY & ENVIRONMENT (HSE)

TECHNOLOGY



Quality

BIN JOHAR METALS CONTRACTING shall implement and maintain a Quality Management System to ensure providing services which satisfy our client's requirements and comply with all applicable regulatory requirements.

- We have committed ourselves to provide quality services to customers on time to their delight.
- We have committed ourselves to continually improve our service and it will be measured to achieve the bench mark.
- We have committed ourselves to actively involve the employees in all level for the growth of organization.
- We have committed ourselves to maintain clean environment in and around and to follow safe operation inside the organization.
- We have committed ourselves to maintain the Occupational Health & Safety of the employees working in the organization.
- We have committed to establish, implement and continually measure the achievement of our quality objective.

BIN JOHAR METALS CONTRACTING shall ensure that this Quality Management System Policy is documented, reviewed and communicated to personnel at all levels within the organization and to interested parties.

Establishing the Quality policy

BIN JOHAR METALS CONTRACTING has established and documented its policy for Quality and ensures that it:

- Is appropriate to the purpose and context of the organization and supports its strategic direction;
- Provides a framework for setting Quality objectives;
- Includes a commitment to satisfy applicable requirements;
- Includes a commitment to continual improvement of the Quality management system.

Communicating the QHSE policy

The Quality Policy is reviewed every six months during the Management Review meeting by the top management to ensure that the policy is in line with the current corporate policies and goals.

The Policy is signed by the DIRECTOR and is communicated to all employees.

Health, Safety & Environment (HSE)

In accordance with its duty under Indian legislation, the DIRECTOR of **BIN JOHAR METALS CONTRACTING** Group is committed to adhering to the following statement of policy in respect of health, safety and environment issues that arise in the course of carrying out business.

BIN JOHAR METALS CONTRACTING Group will ensure that all operations are carried paying due regard to moral, ethical and legislative requirements imposed upon them. This will enable work to be undertaken with the provision of appropriate safeguards to prevent any members of the public, employees or sub-contractors being exposed to risks to their Health and Safety and damage to the Environment.

BIN JOHAR METALS CONTRACTING aims to achieve a safe working environment, free from accidents and ill-health, with no damage to the environment, and will therefore pursue continuous improvement. BIN JOHAR METALS CONTRACTING believes the safety and health of employees and the preservation of the environment are both an individual and management responsibility and therefore will demonstrate commitment to HSE issues by:

-
- Adhering to the HSE policy document and the HSE Management System;
 - Identifying hazards/aspects and assessing the risks/impacts;
 - Implementing appropriate preventive and protective measures;
 - Establishing and enforcing safe and environmentally sound methods of work;
 - Providing and maintaining safe plant and work equipment;
 - Ensure design, engineering and process improvements and practices, reduce negative environmental impacts, waste, energy, raw material consumption and prevent pollution;
 - Recruiting and appointing personnel who have the skills, abilities and competence commensurate with their role and level of responsibility;
 - Ensuring that tasks given to employees are within their skills, knowledge and ability to perform;
 - Ensuring that technical competence is maintained through the provision of training as appropriate to raise awareness of HSE issues at work;
 - Promoting awareness of HSE and of good practice through the effective communication of relevant information;
 - Ensuring resources are available to meet these objectives.

BIN JOHAR METALS CONTRACTING carries out its business operations through Directors, and Supervisors for whom, managing HSE is a vital and ongoing part of their operational responsibilities.

This policy will be reviewed annually to monitor its effectiveness and to ensure that it reflects changing needs and circumstances.





Technology



Technology-Driven Execution

Bin Johar integrates technology into project planning, coordination, and execution to improve accuracy, efficiency, and control. Digital tools support design coordination, fabrication planning, scheduling, and progress monitoring across all service lines.



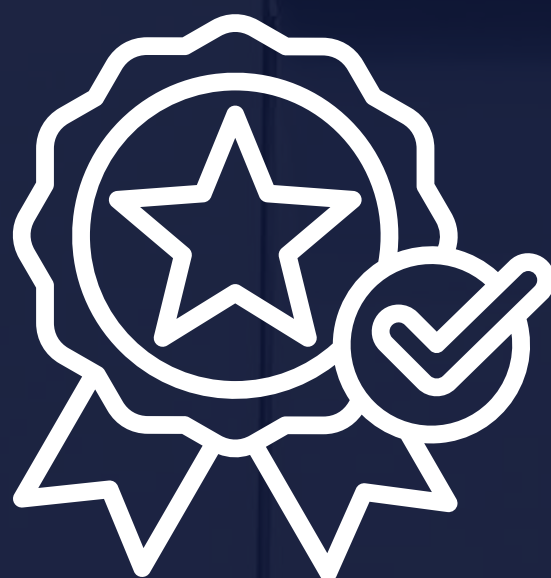
Process Control & Data Security

Operational processes are supported by controlled documentation, digital workflows, and secure information handling aligned with **ISO/IEC 27001:2022**. This ensures data integrity, confidentiality, and traceability throughout the project lifecycle.



Efficiency & Performance Enhancement

Technology adoption enables improved coordination between teams, reduced execution risks, and better visibility into project performance. These systems support informed decision-making, optimised resource utilisation, and consistent delivery of quality outcomes.

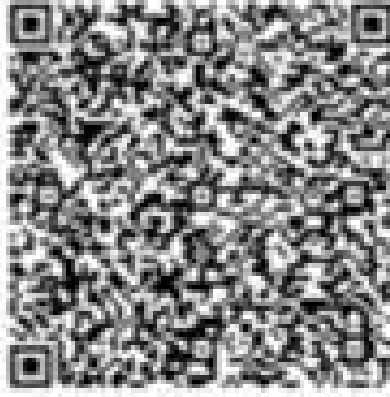


OUR ACCREDITATIONS

ISO 9001

ISO 45001

ISO 14001



رخصة تجارية / Trade License

رخصة عادية - Regular License

رخصة رقم 52713 License No.

رقم الغرفة ACCI No. 52610

رقم السجل التجاري Register No. 45273

تفاصيل الرخصة	تحديث رخصة به / Update License with Renew	معلومات الرخصة
الاسم التجاري: بن جوهر للمقاولات المعمية (ذ.م.م - ش.م.و.)	Trade Name: BIN JOHAR METALS CONTRACTING (S.P.S - LLC)	
النسبة القانونية: ذ.م.م (شركة الشخص الواحد)	Legal Form: LLC (SOLE PROPRIETORSHIP)	
تاريخ الاصدار: 2008-09-10	Issue Date: 2008-09-10	تاريخ الانتهاء: 2026-11-05

اسم صاحب الترخيص / Member Name	الجنسية / Nationality	رقم الجواز / Passport	الصفة / Role
عبدالله علي جوهر علي جوهر ABDULLAH ALI JOHAR ALI JOHAR	باكستان Pakistan	AZ1789172	مالك Owner - Proprietor

اسم المدير / Manager Name	الجنسية / Nationality	رقم الجواز / Passport
عبدالله علي جوهر علي جوهر ABDULLAH ALI JOHAR ALI JOHAR	باكستان Pakistan	AZ1789172

الأنشطة	Activities
مقاولات المنشآت المعمية	Metal Establishment Contracting
مقاولات مشاريع البناء بأنواعها	All Kind Building Projects Contracting

العنوان / Address	اسم المؤجر / Lessee	تاريخ انتهاء عقد الايجار / Contract Expiry Date	صندوق البريد / P.O. Box
أخرى رقم 101، الرملة 1 Other No. 101, Rumalla 1	- محمد اسماعيل علي جوهر و عبدالله علي جوهر	2026-07-14	0

رقم الايصال / Voucher No.	تاريخ الايصال / Voucher Date	رقم التوظيف / Emp No.
30184682	2025-08-12	

تاريخ الطباعة Print Date 2025-08-13

وثيقة إلكترونية معتمدة وصادرة بدون توقيع من دائرة التنمية الاقتصادية - عجمان. لمراجعة صحة البيانات الواردة في الرخصة يمكنك مسح الباركود

Approved electronic document issued without signature by the Department of Economic Development. To verify the license kindly scan the BarCode



CERTIFICATE OF REGISTRATION

This is to certify that

BIN JOHAR METALS CONTRACTING (S.P.S-L.L.C)

Office No. 101, Rumaila 1, Ajman, United Arab Emirates.

In recognition of the organization's management system
that conforms to the requirements of

ISO 9001:2015

Quality Management System

The scope of this certificate is applicable to

Metals Works Construction, Aluminium Works Construction,
Stainless Steel Works Construction, Civil Work Construction,
Building Maintenance Works, Interior Fit Out Construction,
Tensile Shade Structures Works.

Certificate No : QMS/25/12412

Certificate issue date : 24-12-2025
Certificate expiry date : 23-12-2028

1st Surveillance due before : 24-12-2026
2nd Surveillance due before : 24-12-2027



MSCB505



Authorised Signatory
AMS Certification

This certificate will be valid until 24 Dec 2026 and will be replaced by a new certificate after successful completion of the surveillance audit.

AMS Certification is Accredited by ASIB (Accred Services International Board (Europe) Limited) Certification Body
Registered Office : Sharjah Media Free Zone, Sharjah, United Arab Emirates. Accreditation Body Registered Office
Kemp House, 160 City Road, London, United Kingdom.

This certificate remains valid while the holder maintains the management system in accordance with the standard(s) above, which will be periodically audited by AMS. This certificate remains the property of AMS Certification and must be returned on request. In the issuance of this certificate, AMS Certification assumes no liability to any party other than to the client, and then only in accordance with the agreed upon certification agreement. Validity of this certificate may be confirmed at www.amscertification.org, directly through QR code by using any device with correct information or email to info@amscertification.org.



amscertification.org



CERTIFICATE OF REGISTRATION

This is to certify that

BIN JOHAR METALS CONTRACTING (S.P.S-L.L.C)

Office No. 101, Rumaila 1, Ajman, United Arab Emirates.

In recognition of the organization's management system
that conforms to the requirements of

ISO 14001:2015

Environmental Management System

The scope of this certificate is applicable to

Metals Works Construction, Aluminium Works Construction,
Stainless Steel Works Construction, Civil Work Construction,
Building Maintenance Works, Interior Fit Out Construction,
Tensile Shade Structures Works.

Certificate No: EMS/25/12413

Certificate issue date : 24-12-2025
Certificate expiry date : 23-12-2028

1st Surveillance due before : 24-12-2026
2nd Surveillance due before : 24-12-2027



Authorised Signatory
AMS Certification

This certificate will be valid until 24 Dec, 2026 and will be replaced by a new certificate after successful completion of the surveillance audit.

AMS Certification is Accredited by ASIB (Accred Services International Board (Europe) Limited)

Certification Body Registered Office : Sharjah Media Free Zone, Sharjah, United Arab Emirates.

Accreditation Body Registered Office : Kemp House, 160 City Road, London, United Kingdom.

This certificate remains valid while the holder maintains the management system in accordance with the standard(s) above, which will be periodically audited by AMS. This certificate remains the property of AMS Certification and must be returned on request. In the issuance of this certificate, AMS Certification assumes no liability to any party other than to the client, and then only in accordance with the agreed upon certification agreement. Validity of this certificate may be confirmed at www.amscertification.org, directly through QR code by using any device with correct information or email to info@amscertification.org.



amscertification.org



CERTIFICATE OF REGISTRATION

This is to certify that

BIN JOHAR METALS CONTRACTING (S.P.S-L.L.C)

Office No. 101, Rumaila 1, Ajman, United Arab Emirates.

In recognition of the organization's management system
that conforms to the requirements of

ISO 45001:2018

Occupational Health & Safety Management System

The scope of this certificate is applicable to

Metals Works Construction, Aluminium Works Construction,
Stainless Steel Works Construction, Civil Work Construction,
Building Maintenance Works, Interior Fit Out Construction,
Tensile Shade Structures Works.
Certificate No : OHSMS/25/12414

Certificate issue date : 24-12-2025
Certificate expiry date : 23-12-2028

1st Surveillance due before : 24-12-2026
2nd Surveillance due before : 24-12-2027



MSCB505

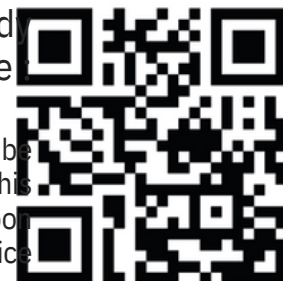


Authorised Signatory
AMS Certification

This certificate will be valid until 24 Dec, 2026 and will be replaced by a new certificate after successful completion of the surveillance audit.

AMS Certification is Accredited by ASIB (Accred Services International Board (Europe) Limited) Certification Body
Registered Office : Sharjah Media Free Zone, Sharjah, United Arab Emirates. Accreditation Body Registered Office
Kemp House, 160 City Road, London, United Kingdom.

This certificate remains valid while the holder maintains the management system in accordance with the standard(s) above, which will be periodically audited by AMS. This certificate remains the property of AMS Certification and must be returned on request. In the issuance of this certificate, AMS Certification assumes no liability to any party other than to the client, and then only in accordance with the agreed upon certification agreement. Validity of this certificate may be confirmed at www.amscertification.org, directly through QR code by using any device with correct information or email to info@amscertification.org.



amscertification.org



SCOPE OF SERVICES

METAL WORKS

CIVIL CONSTRUCTION

TENSILE SHADE WORKS

Metal Works

We deliver end-to-end metal fabrication and installation services for industrial, commercial, and architectural projects. From structural steel and facade works to precision aluminium and sheet metal solutions, we combine engineered processes, certified systems, and experienced execution to deliver reliable, high-quality outcomes across every project.

Structural Steel Fabrication

Structural Steel Erection

Hot-Rolled Steel Buildings & Structure

Pre-Engineered Steel Buildings (PEB)

Industrial Steel Platforms & Mezzanines

Architectural Steel Works

Sheet Metal Fabrication Works

Aluminium Fabrication & Installation

Aluminium Facade & Cladding Works

Metal Wall Cladding & Wall Paneling

MEP Support Steel Works

Surface Treatment & Protective Coatings



Civil Construction

We deliver comprehensive civil construction services across industrial, commercial, and infrastructure projects. Our civil works are executed with a strong focus on structural integrity, quality control, and site safety, supported by experienced teams and disciplined project management. From groundworks to finishing works, we ensure reliable delivery aligned with approved drawings and project specifications.

General Civil Construction Works

Site Preparation & Earthworks

Foundations & Substructure Works

Reinforced Cement Concrete (RCC) Works

Formwork & Shuttering Works

Masonry Works

Plastering & Screeding Works

Flooring Works

External Works & Hard Landscaping

Drainage & Utility Works

Roads, Pavements & Interlock Works

Repair, Refurbishment & Structural Strengthening



Tensile Shade Works

Bin Johar provides engineered tensile shade solutions designed for durability, safety, and visual appeal. Our tensile structures are manufactured and installed using high-quality membranes and structural systems, delivering effective sun protection for commercial, industrial, and public spaces while complementing the surrounding architecture.

Car Parking Tensile Shades

Walkway & Pedestrian Canopy Shades

Pergola Tensile Structures

Outdoor Seating & Recreational Shades

Entrance & Drop-Off Canopies

Swimming Pool & Leisure Area Shades

Playground & School Shade Structures

Commercial & Public Space Shades

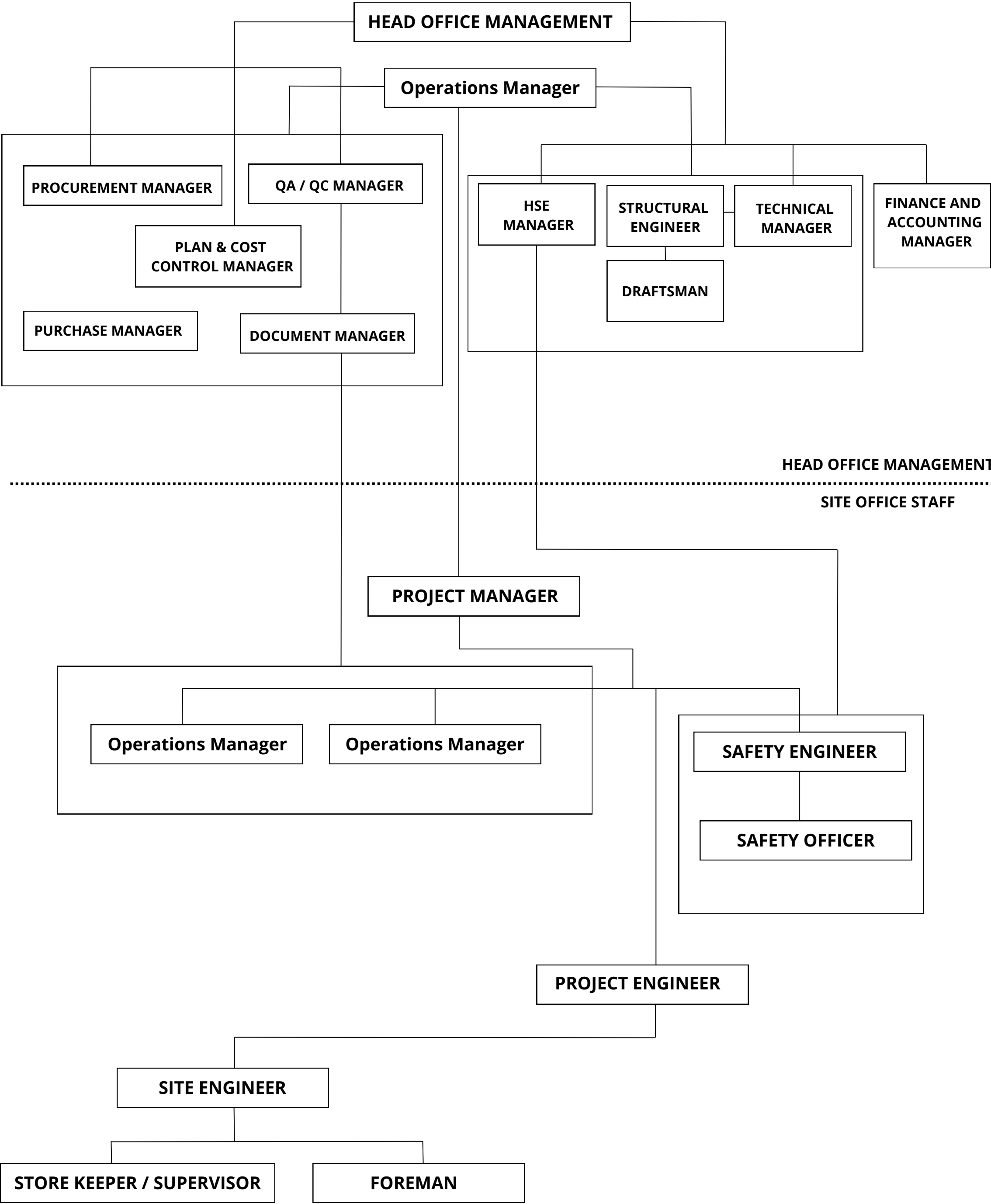
Custom Tensile Structures





OUR RESOURCES

Team Organization Chart





PROJECTS PORTFOLIO

[PROJECT LIST](#)

[PROJECT GALLERY](#)

[EQUIPMENT LIST](#)

Project List

S No.	Project Name	Scope	Value
1	Dubai Mall, Dubai	Metal Works	6 million
2	Star Gate – Zabeel Park, Dubai	Metal Works	14 million
3	Star Gate – Zabeel Park, Dubai	Shade Structure	12 million
4	Lulu – Madina Zayed, Abu Dhabi	Skylight	850,000
5	Crown Prince Office, Dubai	Metal Works	4 million
6	Sheik Zayed Program, Dubai	Metal Works	2.8 million
7	Ajman Municipality, Ajman	Metal Works	1.8 million

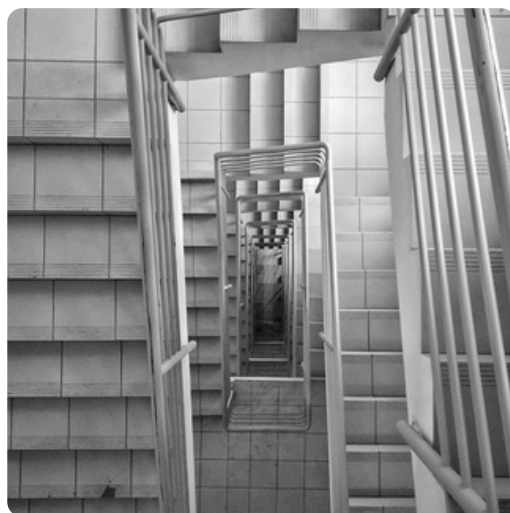


Project Gallery

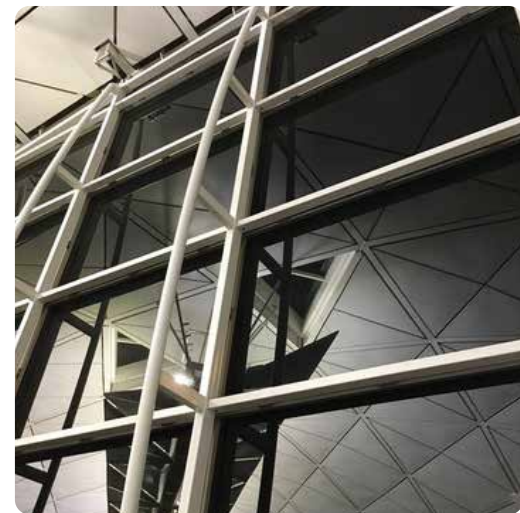
Shade Structures



Metal Works



Project Gallery



Civil Works



Equipment List

List of Factory Equipments		
Sl No.	Name of Equipment	Quantity
1	Electric Facility with Transformer from FEWA	294 KW
2	CNC Plate Cutting Machine 3m x 12m - Gas & Plasma	1
3	CNC Plate Drilling & Cutting Machine	1
4	CNC Plate Marking Machine	1
5	Splice Welding Machine for PEB Beam Line	1
6	Tag Welding Machine for PEB Beam Line	1
7	Automatic Submerged Arc Beam Welding Line (Full Automatic for PEB)	1
8	Tower Crane 8 Ton Capacity	2
9	EOT Crane Inside Shed for PEB Beam Line & CNC Cutting	1
10	Stand Drill Machine	3
11	Automatic Magnet Drill Machine	6
12	Lathe Machine for Anchor Bolts & Threading Creation	1
13	Automatic Gas Plate Cutting Machine	3
14	Hand Gas Cutter Set	6
15	Electric Arc Welding Machine (500/400 AMP)	10
16	Electric Power Generator Machine 100 KVA	1
17	Grit Blasting Machine with 600 CFM Full Automatic Compressor	1
18	Painting Full Set with Pump for Epoxy Paint	2

Equipment List

List of Equipments for Erection & Cladding		
Sl No.	Name of Equipment	Quantity
1	Mobile Crane 25 Tons	1
2	Mobile Crane 50 Tons	1
3	Man Lift Machine	3
4	Scissor Lift Machine	2
5	Diesel Welding Generator	2
6	Petrol Welding Generator	3
7	Hand Drill Machine	20
8	Concrete Drill Machine	6
9	Hand Grinding Machine	10
10	Hand Gas Cutting Set	8
11	Disc Cutter Machine	6
12	150 Liter Air Compressor with Set	1
13	Screw Gun Machine	8
14	Bolt Tightening Machine	6
15	Hand Tools Set	10
16	Tool Box	10
17	Torque Wrench Set	3
18	Alco Meter	2



GET IN TOUCH



+971 55 746 0000



info@binjoharcontracting.com



Office no:305, AlAndalus Building
Sheikh Khalifa Bin Zayed Street
Al Rashidiya 3, Ajman, UAE

